



FLOW Digital

Micro flow meter Use Manual

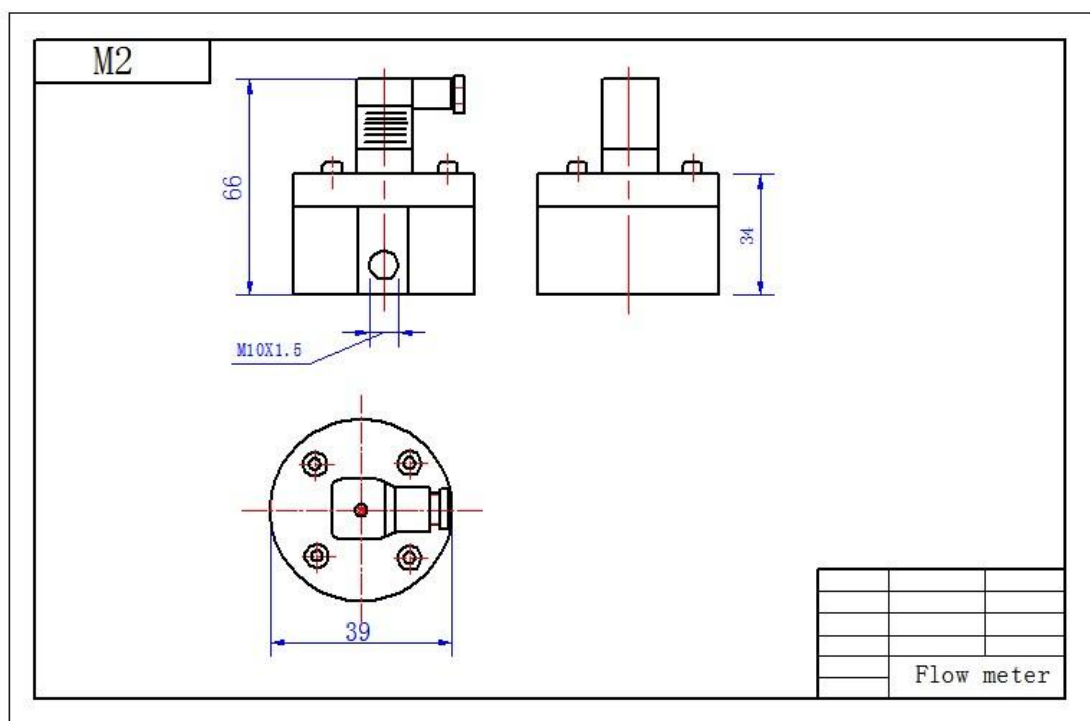
1.Parameters

Item1

Model	CX-M2-SS	CX-M3-SS	CX-M5-SS	CX-M6-SS	CX-M9-SS	CX-M12-SS	CX-25-SS
Flow Range	0.5~150mL/min	3~300 ml/min	5~1000mL/min	0.5~100L/H	6~600 L/H	0.3~30 L/min	0.5~100L/min
Connection	G1/8 female thread	G1/8 female thread	G1/8 female thread	G1/4 female thread	G1/4 female thread	G1/2 female thread	G1 female thread
Medium	Suitable for various chemical liuqid						
Accuracy	0.50%						
Temperature	-30~80C						
Pressure	32Bar （customized for high pressure）						
Output	Square-wave pulse						
Supply	4-26VDC						
Material	Chamber:SS316L,gear:SS316L,shaft:SS316L						

Item2

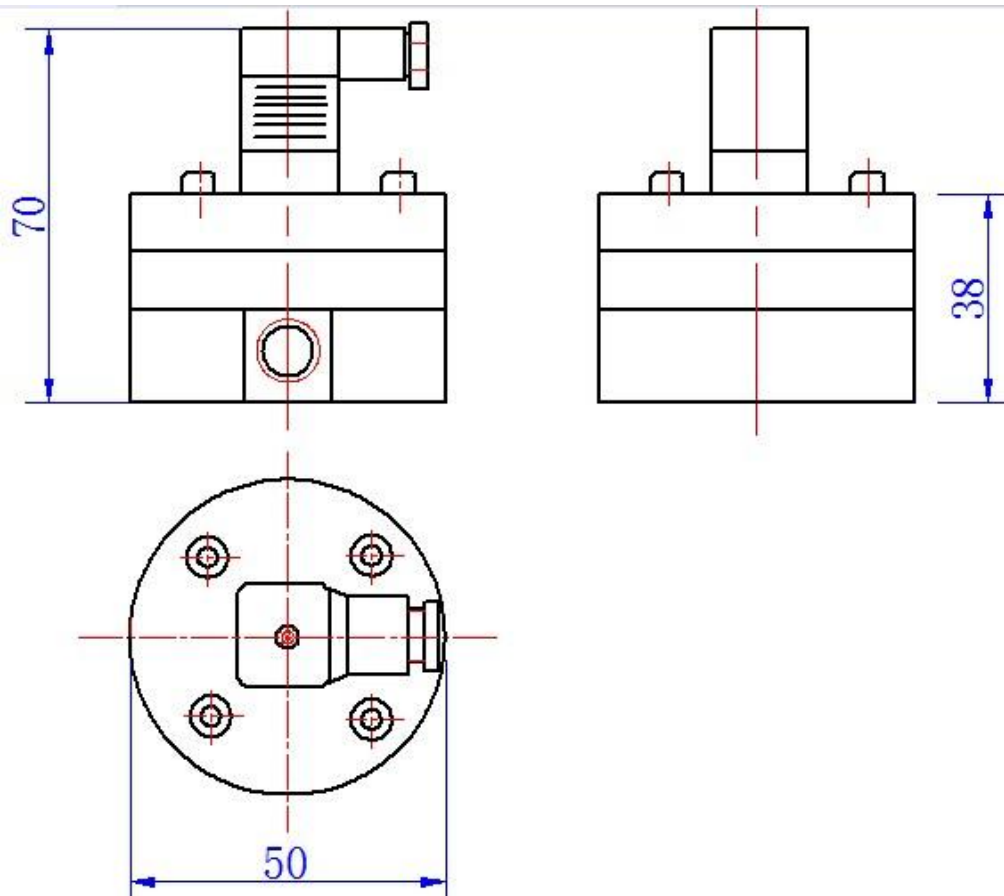
Model	CX-M3-AL	CX-M5-AL	CX-M6-AL	CX-M9-AL	CX-M12-AL	CX-25-AL
Flow Range	3~300 ml/min	5~1000mL/min	0.5~100L/H	6~600 L/H	0.3~30 L/min	0.5~100L/min
Connection	G1/8 female thread	G1/8 female thread	G1/4 female thread	G1/4 female thread	G1/2 female thread	G1 female thread
Medium	Suitable for various chemical liuqid					
Accuracy	0.05%					
Temperature						
Pressure	32Bar （customized for high pressure）					
Output	Square-wave pulse					
Supply	4-26VDC					
Material	Chamber:SS316L,gear:SS316L,shaft:SS316L					





FLOW
Digital

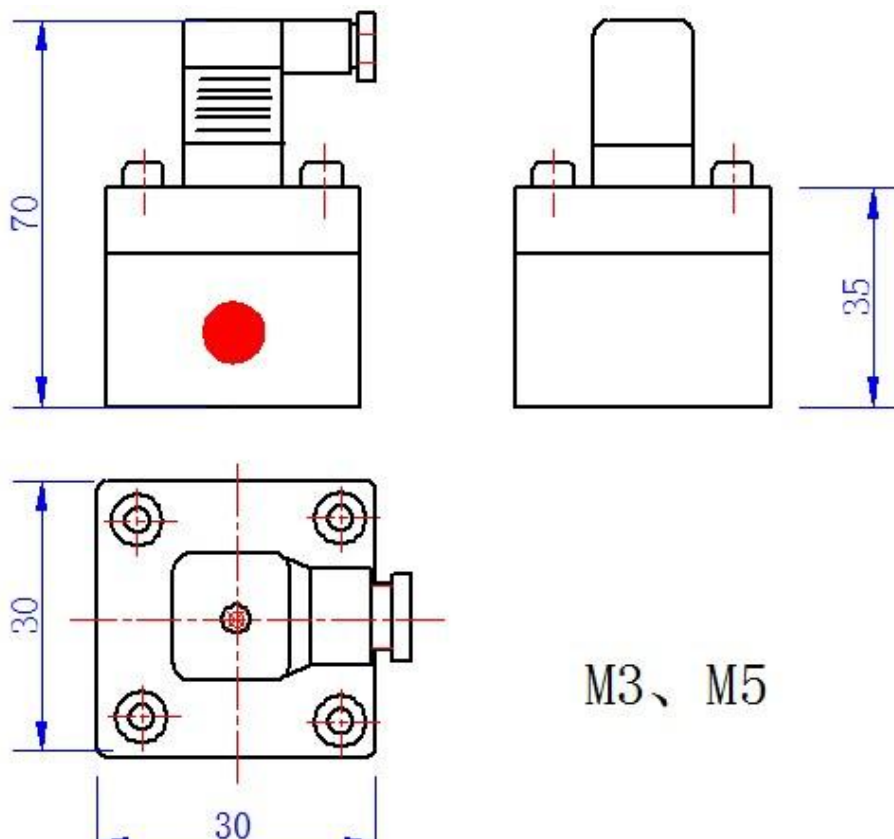
2.CX-M6 Micro Flow Meter



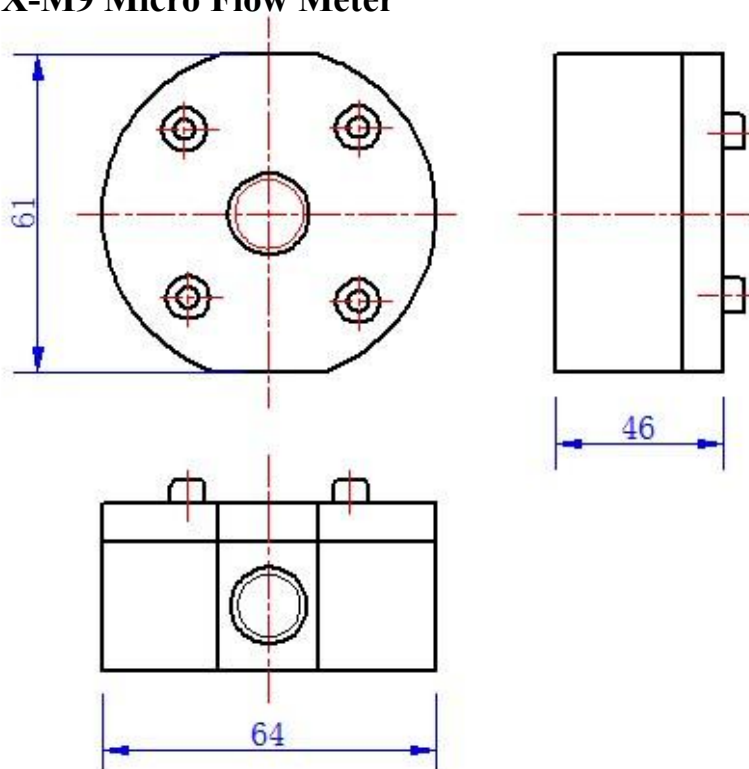


FLOW
Digital

3.CX-M3/M5 Micro Flow Meter



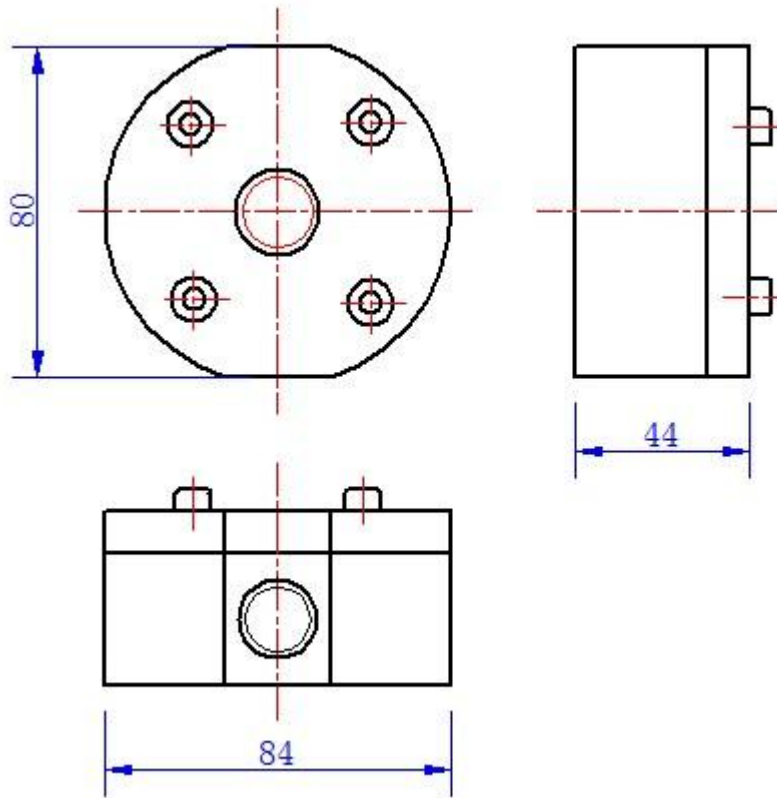
4.CX-M9 Micro Flow Meter





FLOW
Digital

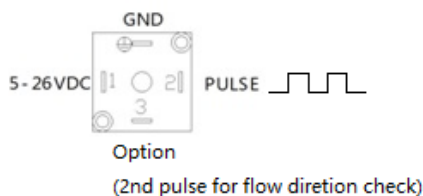
4..CX-M12 Micro Flow Meter



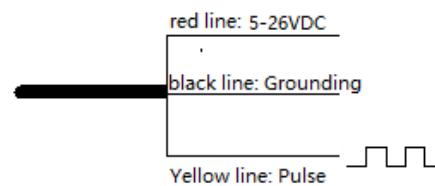


2.2 Wiring Diagram

Hirschmann connector type:



Fly line type:



1. Micro flow meter installation(Cover must be in vertical)

- a. Should be exhaustive cleaned before the pipeline installation , and install the filter in front of flow meter, to prevent contaminants from entering the meter.

During installation ,must be sure to avoid contamination enter inlet port.

If the the liquid with gas pls install the Air separator.

- b. Must let the oval gear bearing parallel to the horizontal plane,so the cover should vertical to the horizontal plane.For super micro flow meter the best installation method is enter from below and pouring from upper part.

The closed valve must located at the import and export part of flow meter to adjust the flow .

- c. The arrow direction must same as the flow direction in the pipe.
- d. Always mobility pipe ,the pipe installed flow meter must with Bypass valve ,so could Regular cleaning .and Overhaul.

4. Precautions

- a. When you start or stop, open and close the valve should be slowly to prevent sudden impact.
- b. To prevent error pulses, should prevent backflow;
- c. Be sure to install the filter in fort of flowmeter;
- d. If it is easy to crystallize liquids, take measures to prevent the liquid crystalline flowmeter where the pipe segment.

5.The reason of common error , Method of exclusion.



- a. Gear does not rotate: Gear stuck debris, need to clean up the gear and the cavity, and clean or replace the filter
- b. low flow error will large: Flow meter installed in the wrong direction, The best location is import from below and export from upper.
- c. Flow error is too large: Actual flow range below or much larger than the range of the flow meter Need to select the corresponding range of the flow meter.
- d. Flow sensor no signal: Gear jammed or mis-circuit or circuit is damaged. It needs cleaning gear and the cavity, or the right to re-connect the circuit, or replace the circuit.